



# 6 Scenic Crescent

MODERN LUXURY HOME | PREMIUM FINISHES



Double Garage



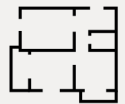
737 m<sup>2</sup>



4 Bedroom



2 Bathroom



234m<sup>2</sup> Approx

CONTACT US:



+61 7 0000 0000



WhitsundayParadiseHomes.com.au



6 Scenic Crescent, Bowen QLD 4805

FIXED PRICE PACKAGE

# \$980,000

+ \$49,000PA RENT BACK 24 MONTHS

# 6 SCENIC CRESCENT

Appliances included, Landscaping included.  
Furniture package available.  
Fixed Turn Key Price.

*\*To be used for Display purposes over the 24 month  
Period.*

## CABINETSRY HIGH END FINISHES:



**Overhead Cabinets / Tall Cabinets**  
Polytec Venette  
"Oyster Grey"  
Matte finish



**Base Cabinets**  
Polytec Woodmatt  
"Tasmanian Oak"  
Timber-look finish



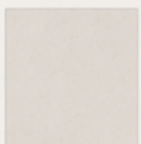
**Island Feature Finish**  
Tasmanian Oak  
Matching vertical timber batten feature



**Display Cabinet Interior**  
Dark walnut timber-look finish  
Integrated warm LED strip lighting



**Handle Design**  
Concealed handles / Shadowline  
Minimalist recessed edge detail



**Benchtop / Countertop Reference**  
Quartz stone benchtop  
Warm white base with subtle fine veining



Haier - 90cm Build in Oven

Haier - 90cm - 500 Series Induction cook-top

Haier - 300 Series Dishwasher

Haier - 8kg Heat Pump Dryer Dark

Haier - 8.5kg 300 Series Front Load Washing Machine Dark

Micoe - R290 All in One Heat Pump Water Heater

Haier HRF580YHS 508L Quad Door Fridge (Satina)

Haier - Air conditioner SPLIT SYSTEM AIR

From an empty lot into lifestyle-ready home, We Make it Happen.



Land - 737 m<sup>2</sup>



Floor Plan - 234m<sup>2</sup> Approx



4 Bedroom



Double Car Garage



2 Bathroom



*6 SCENIC CRESCENT, Bowen*



## DESIGNED FOR PARADISE LIVING



### *Spacious Layout*

Designed to maximise family space and functionality.



### *High Quality Materials*

Selected for durability and everyday living.



### *Natural Light*

Large windows and bright open interiors



### *Smart & Energy Efficient*

Energy-efficient homes, designed for comfort and sustainability.



### *Indoor-Outdoor Flow*

Designed for the Queensland lifestyle.



*Come Home To Paradise..*

## THE WHITSUNDAY PARADISE HOMES DIFFERENCE:

- ✓ *Australian Standards Compliance*
- ✓ *Quality Controlled Construction*
- ✓ *Functional & Practical Designs*
- ✓ *Transparent Communication*
- ✓ *Local Knowledge & Experience*
- ✓ *Outstanding Value for Modern Living*




Licence No. 15531707




*The home of building*

No. 096214

### *CONTACT DETAILS:*

 (07) 5626 9881

 [info@WPHHomes.com.au](mailto:info@WPHHomes.com.au)

 [www.WhitsundayParadiseHomes.com.au](http://www.WhitsundayParadiseHomes.com.au)

*“Designed in Australia.  
Built To Australian Standards.  
Inspired By Global Innovation.”*